

Maptime Seattle

Intro

What are the parts

- A year in review
- Maptime in its larger context
- Lessons learned
- what comes next
- What is this voice in the community

What is MaptimeSEA?

Meet once a month

Free workshops

Targeted at beginners

The past year we've had

- 15 meetups
 - 10 workshops
 - 1 HOT OSM
 - 1 project night
 - 1 Spring Fling
 - 1 office hours
 - 1 geo-coffee
- 307 members!
- 100s of maps!

Open source?

Free as in free speech, not as in free beer.

**Happy birthday,
MaptimeSEA!**



image of website

[MAPTIMESEA](#)

[MAPTIME SEATTLE](#)

[STAY CONNECTED](#)

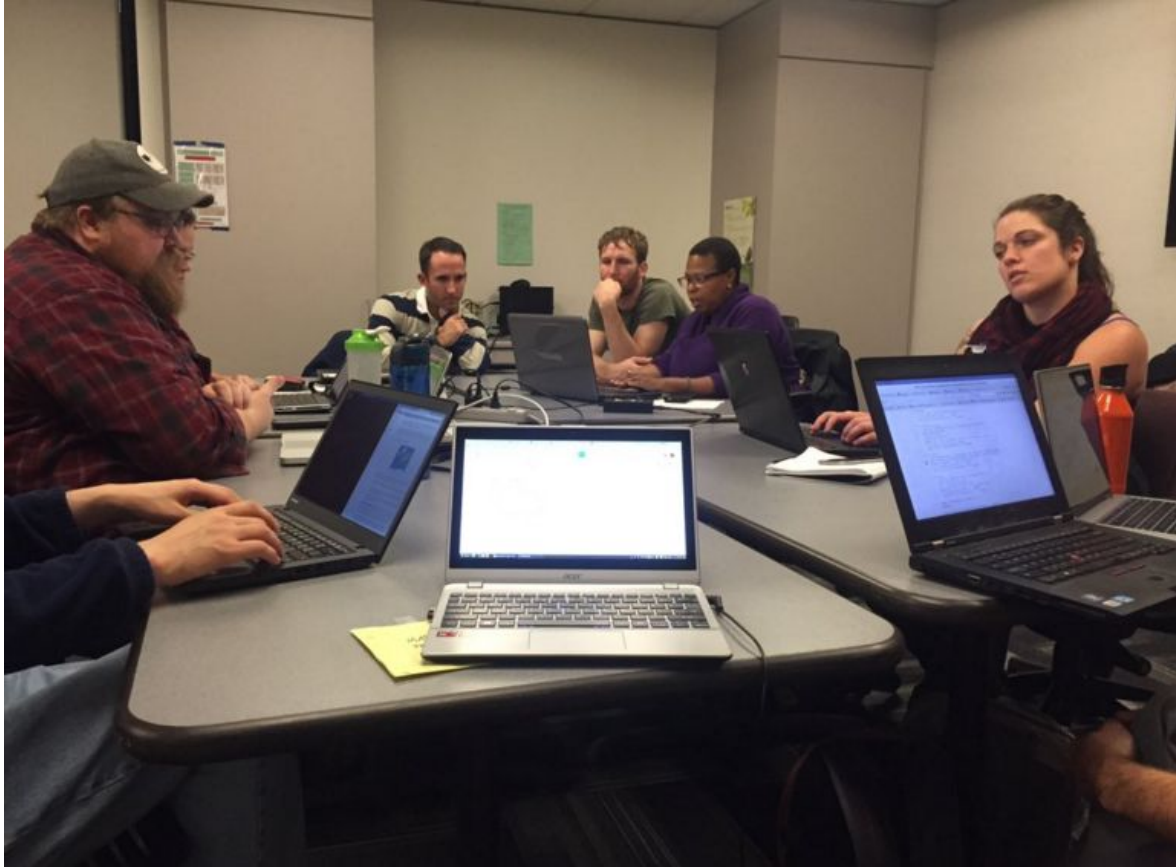
[OUR TUTORIALS](#)

Maptime Seattle

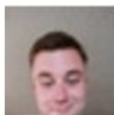


MaptimeSEA is the Seattle branch of the international Maptime community. Together, we learn and explore mapping technologies through tutorials and other meetups. We organize and teach under these major principles:

images of meetings



Images of work people have done



Jake Creps

Great learning experience. Well organized with room to improvise.

Like · Reply · October 8 · Mute



Angele Zamarron

Great meetup! Thanks so much to everyone.

Like · Reply · June 12 · Mute



Jonny McConnell

Yeah! Very well put together workshop, thank you.

Like · Reply · October 8 · Mute



Matthew

Thanks everyone for another great meetup! It was nice to meet you all and learn about virtual machines.

Like · Reply · August 7 · Mute



John Kriese

The hands on session with reference material was a very effective introduction to TileMill.

Like · Reply · October 7 · Mute

Where did we come from?

Spinoff of CUGOS

established group, been around a while

more technical

Maptime hits the same idea but for a more general crowd

Why do we do this?

we both come from geo backgrounds but not all do

We like GEO

Not all geo is free

ideas are easy, implementation is hard, help people get over the hurdles in early stage

community - engage in community in Seattle, engage in community globally

Why should you join us?

Free meetings

Use open source software (also free)

Broaden knowledge

Community

HOT OSM

“When you use open source you take a lot, so you have to give back”

Larger Maptime community

Maptime started with a small group, now it's gone global!

Where are we going?

QGIS series

More project nights

More volunteer instructors?

Sam will be back

See you at MaptimeSEA!

Next meeting:

Hand Drawn Maps

King County GIS Center

December 2....

<http://www.meetup.com/MaptimeSEA/>